

Issue 2  
November 2024



# Cluster newsletter

Horizon Europe Health Research Cluster for a Healthy Society

**DIOPTRA | LUCIA | MammoScreen | ONCOSCREEN  
PANCAID | SANGUINE**

**#PreventionCluster #EUmissions  
#HorizonEU #MissionCancer**



Funded by  
the European Union



UK Research  
and Innovation

Project funded by



Schweizerische Eidgenossenschaft  
Confédération suisse  
Confederazione Svizzera  
Confederaziun svizra

Swiss Confederation

Federal Department of Economic Affairs,  
Education and Research EAER  
State Secretariat for Education,  
Research and Innovation SERI



## What is the Prevention and Early Detection (Screening) Cancer Cluster?

The Mission Cancer seeks to improve the lives of over 3 million people by 2030 through better prevention, treatment, and support for cancer patients and their families. This ambitious goal is driven by a collaborative network of six EU-funded research projects dedicated to revolutionizing cancer detection and saving lives. They focus on technological advancements and the physical and psychological comfort of the patients. The six projects of the cluster focus on different aspects of cancer detection, from determining and understanding risk factors to developing new and minimally invasive screening techniques.

*Together we are stronger* 



[Stay in touch! Follow us on LinkedIn](#)

## Can inherited pancreatic cancer surveillance inform early detection in the general population? A review.



Cancer screening in the general population aims at primary prevention to reduce disease burden. While effective for cancers like breast, colon, and prostate, screening for pancreatic cancer is more challenging. The pancreas is not easily accessible for physical exams or simple biological tests like fecal or blood test like PSA for pancreatic cancer. Reviewing evidence from screening high-risk groups for pancreatic cancer shows that there is currently no rationale to screen the general population due to the lack of suitable tests.

**Read the review by PANCAID work packages 4&5**

For general questions:  
Tamara Berghammer  
Dissemination manager  
tamara.berghammer@concentris.de

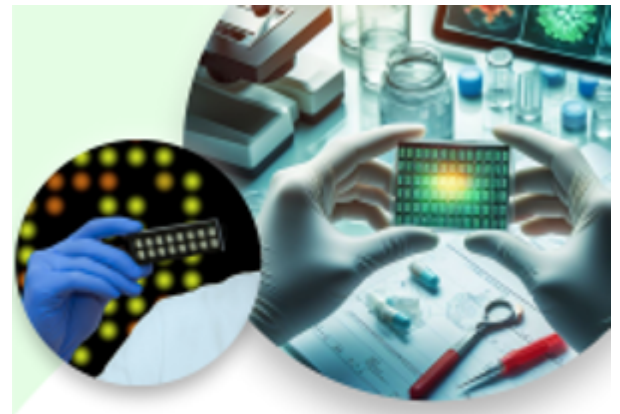
Corresponding author:  
Matthias Löhrl  
Co-coordinator of PANCAID,  
President of UEG  
matthias.lohr@ki.se



# SANGUINE

## Advancing Hematological Cancer Diagnosis: Biomarker Discovery and HemaChip Development

JaxBio and Tel Aviv University (TAU) are identifying biomarkers to distinguish nine hematological malignancies from healthy controls. With over 600 patients recruited in the discovery phase, their technologies and AI algorithms achieve over 90% accuracy in disease classification. Optimised biomarker panels will be printed onto the HemaChip, offering a simple, robust, and low-cost cancer diagnosis solution.



SANGUINE

**Biomarker Discovery and  
HemaChip Development**

**[Read more about this breakthrough in cancer detection](#)**

Contact

Otilia Colceriu

[otilia.colceriu@europeancancer.org](mailto:otilia.colceriu@europeancancer.org)



## Dive into DIOPTRA's innovative work through our new interviews series



We recently reached out to some of the DIOPTRA partners leading various activities to gain their perspectives on the project's mission to revolutionise Colorectal Cancer screening via a holistic, personalised and accessible method for early detection.

This resulted in a series of video interviews that will be available on the project website and official YouTube channel, where they share insights into their challenges and ongoing work. **The first interview features Zheshe Jiang from the Centre Hospitalier Universitaire de Liège (CHUL)** - located in Belgium - who discusses coordinating the clinical partners in DIOPTRA and the studies being conducted withing the project.

**[Watch the first interview](#)**

Contact  
[info@dioptra-project.eu](mailto:info@dioptra-project.eu)





## ONCOSCREEN partners with Lithuanian University of Health Sciences' annual "Hospiton"

This year, the ONCOSCREEN Living Lab hackathon will be taking place in partnership with the Lithuanian University of Health Sciences' annual "Hospiton" from the 22nd - 24th of November. The Hospiton is a premier health-focused hackathon dedicated to enhancing the patient experience in colorectal cancer care. This ONCOSCREEN track will aim to innovate in areas of patient comfort, understanding and support to significantly improve the overall journey for those undergoing CRC treatment and care.



"Hospiton 2024" promises to be a particularly dynamic event, attracting around 150 participants, including experts from various fields, speakers, mentors, coaches, and other professionals. Over 3 days, interdisciplinary teams will tackle cancer patients' pressing challenges, developing groundbreaking solutions that could transform their lives.

**To keep track of updates, check the ONCOSCREEN website**

Contact  
Ivanna Katz

[ikatz@carrcommunications.ie](mailto:ikatz@carrcommunications.ie)

and Irina Kolomiiets

[irina.kolomiiets@lsmu.lt](mailto:irina.kolomiiets@lsmu.lt)



# MAMMOSCREEN

## A step forward to improve breast cancer screening: the MammoScreen Lisbon Meeting



Last 22, 23 and 24th of May, all the MammoScreen Project partners met in Lisbon on the occasion of the 16th Consortium Meeting, the 1st Stakeholder Workshop and the Patient Workshop. The excellent participation of the advisory board members for scientific, ethics and patient group coordinators throughout the meeting steered fruitful discussions and promoted a collaborative atmosphere between scientists, clinicians and patient advocates.

**[More on the MammoScreen website](#)**

Contact  
Martina Pizzi  
[m.pizzi@toscanalifesciences.org](mailto:m.pizzi@toscanalifesciences.org)

## LUCIA Stakeholder Engagement: first Social Lab Workshop & Open Call

On 5 June, the LUCIA project organised its first online LUCIA Social lab workshop with multistakeholder experts.

The workshop focused on the identification of barriers for the implementation of LUCIA technologies in the future for different lung cancer screening scenarios.

The team is now analysing the results and feeding them into a prioritisation survey of the barriers. We will organise the next session of workshops brainstorming on solutions.

Are you interested in collaborating with the LUCIA consortium? Let us know and we will reach out to you at the time of our stakeholder engagement activities. We will let you know about the planned social lab workshops, questionnaires or expert interviews and you will be able to decide if you want to participate or not.



**Join the LUCIA Open Call!**

Contact  
Marie Nabbe  
eco@hope.be